

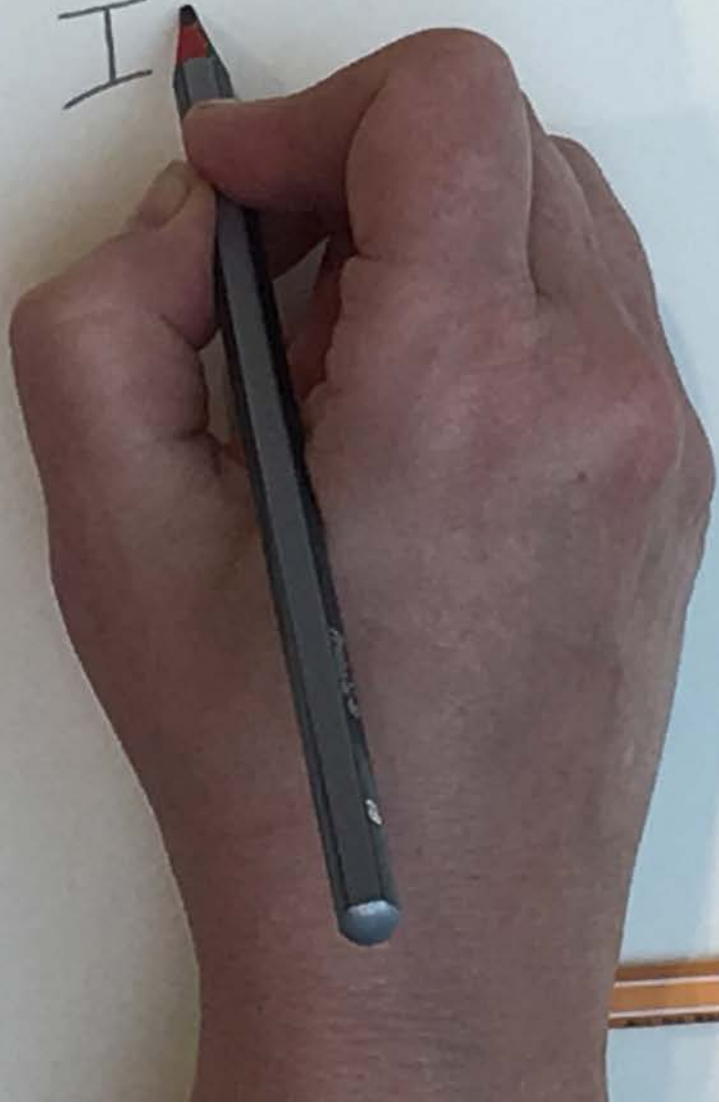








I





IN



INVE

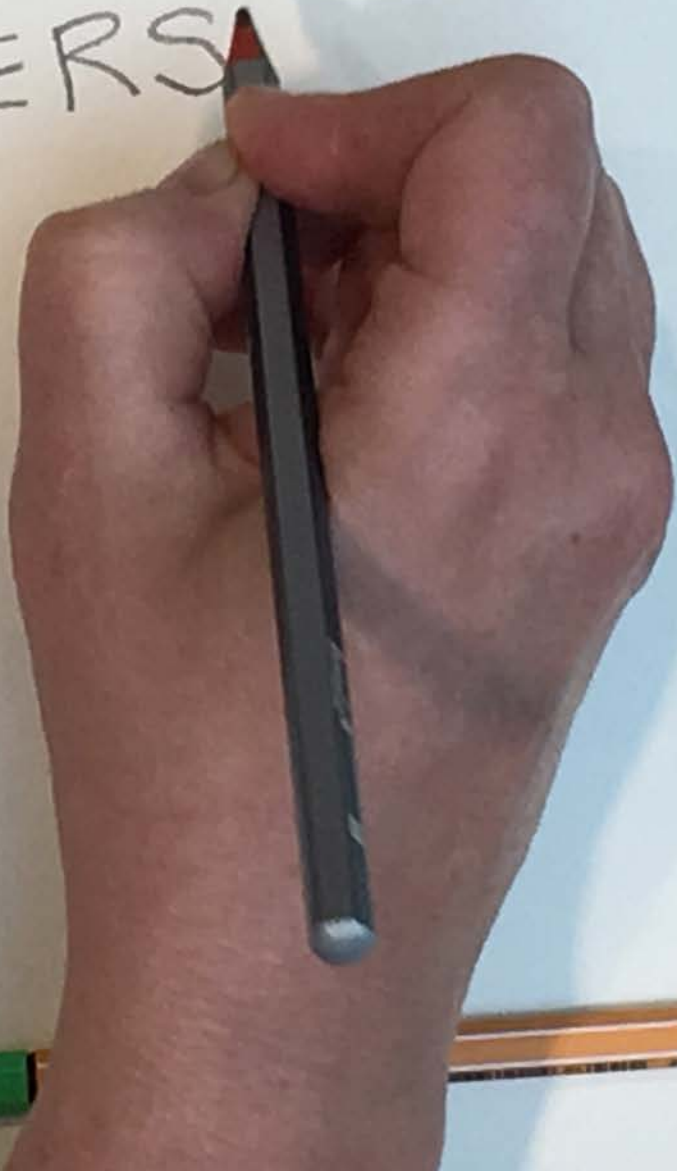




INYE



INVERS

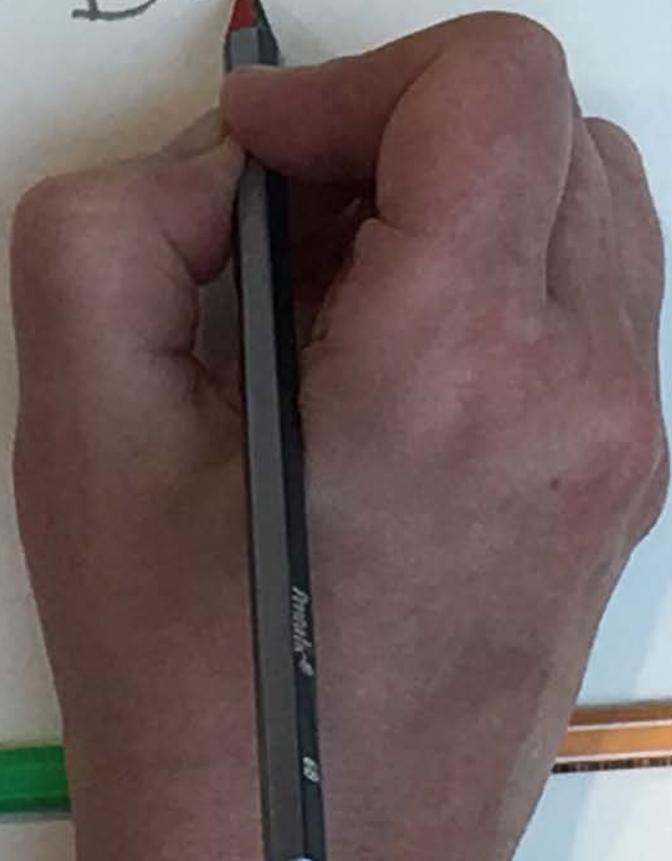


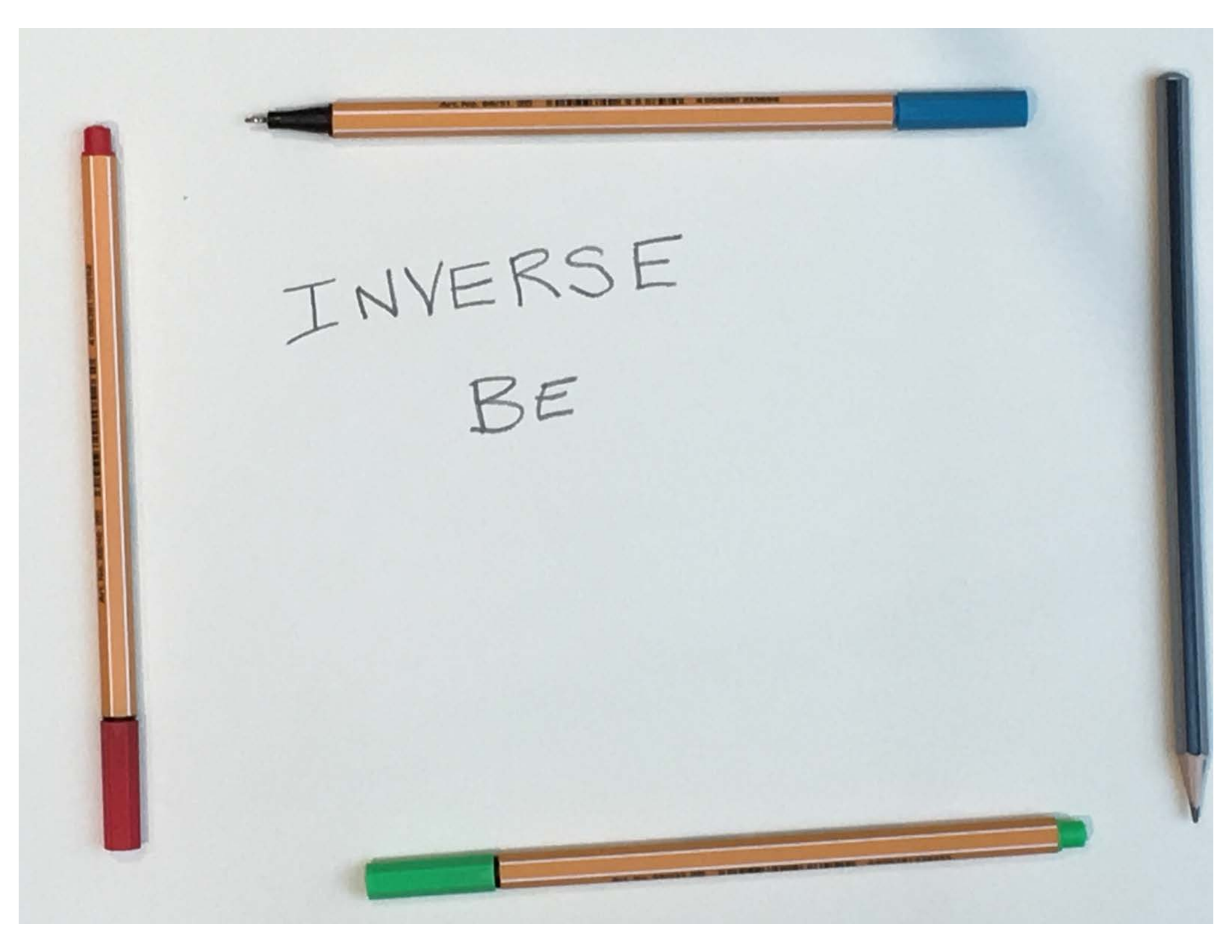
INVERSE



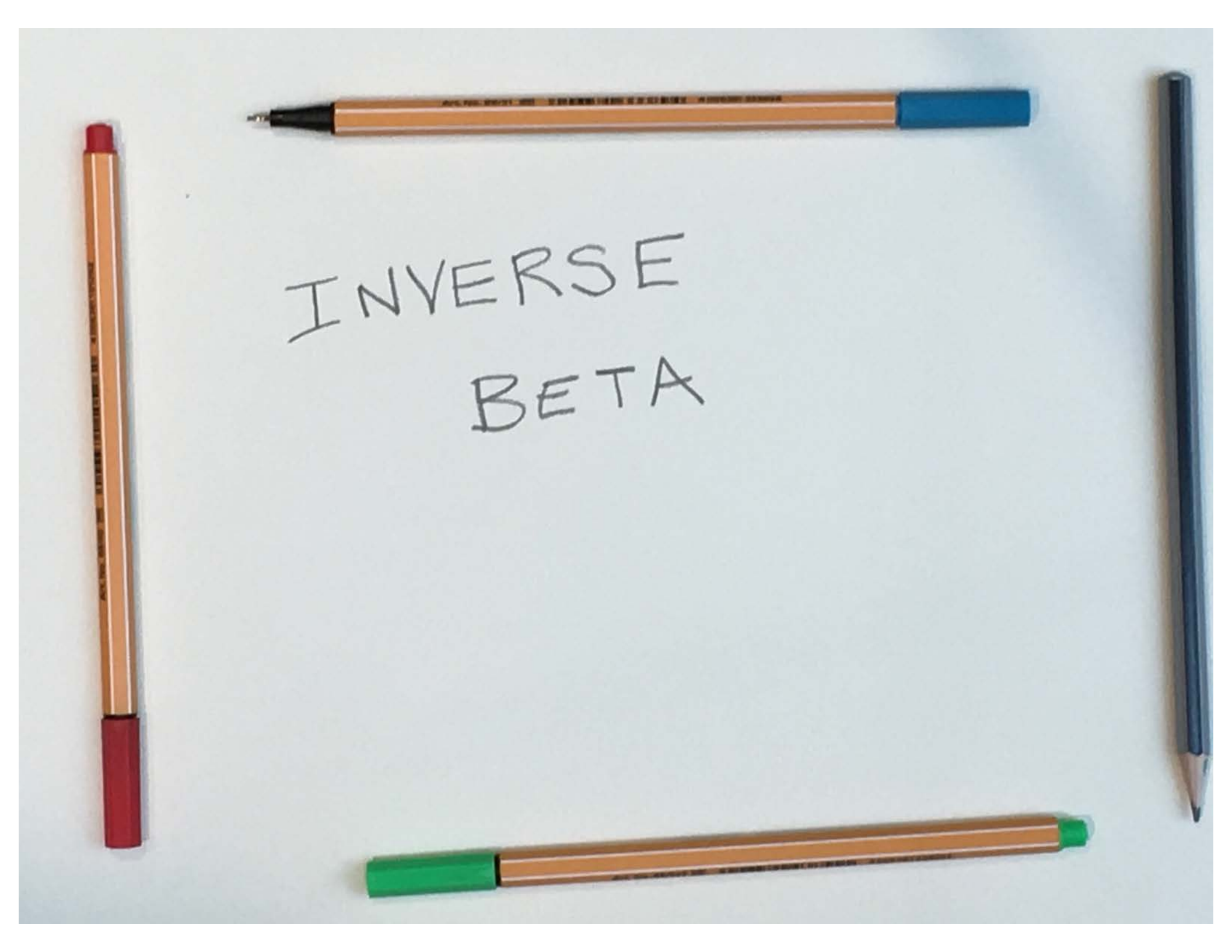
INVERSE

BL








INVERSE
BE



INVERSE
BETA


INVERSE
BETA


D_{t+1}



INVERSE
BETA

DE



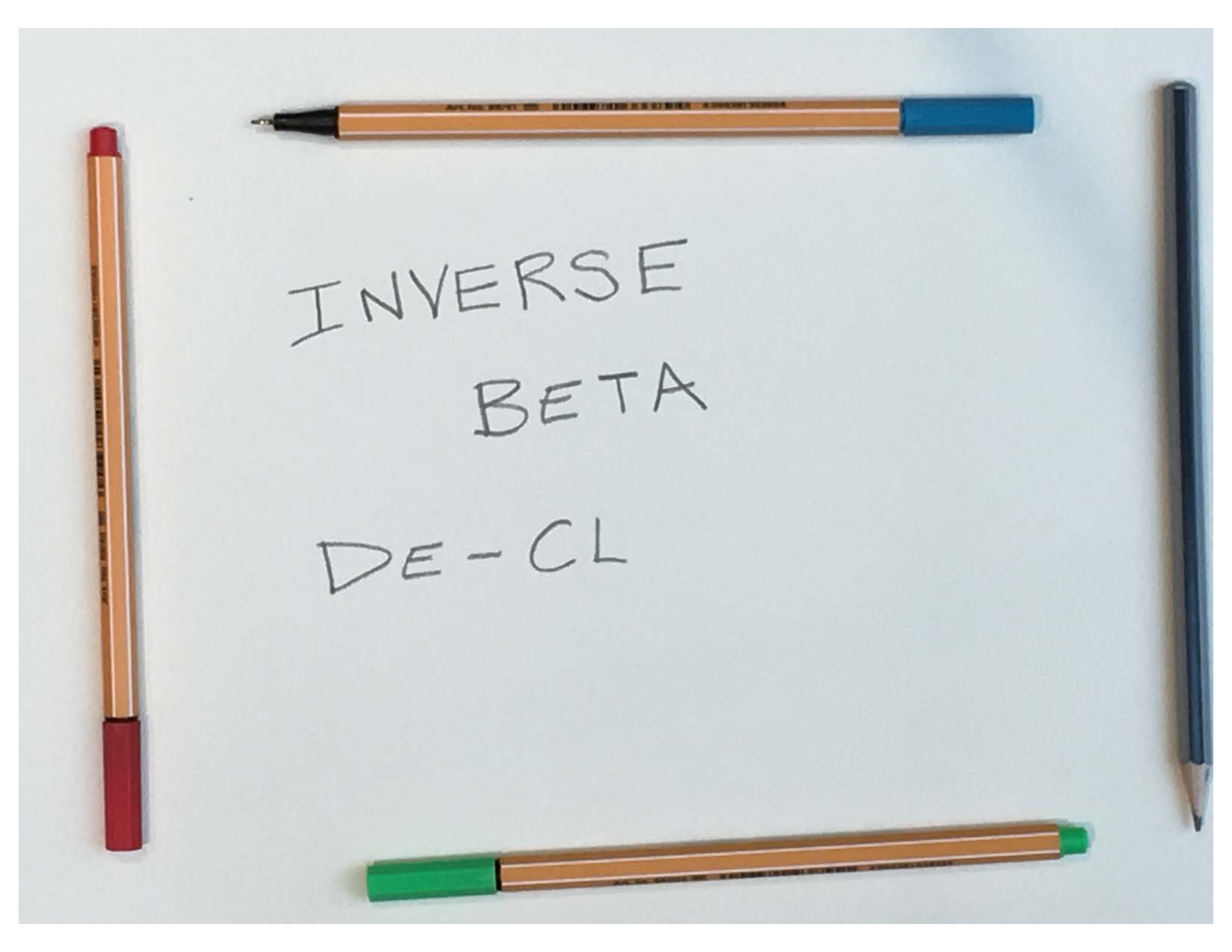


INVERSE
BETA

DE -

INVERSE
BETA

DE-C



INVERSE
BETA

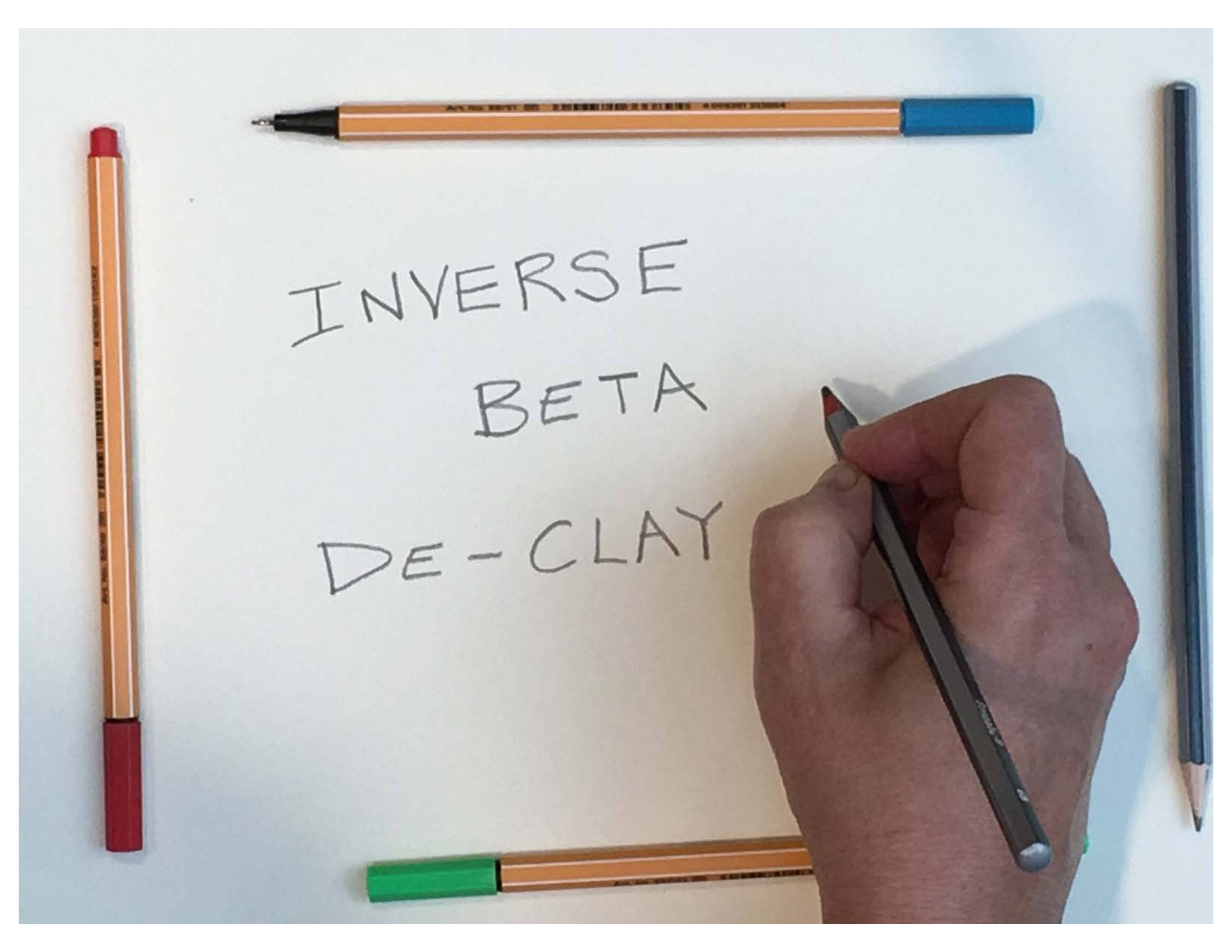
DE-CL



INVERSE

BETA

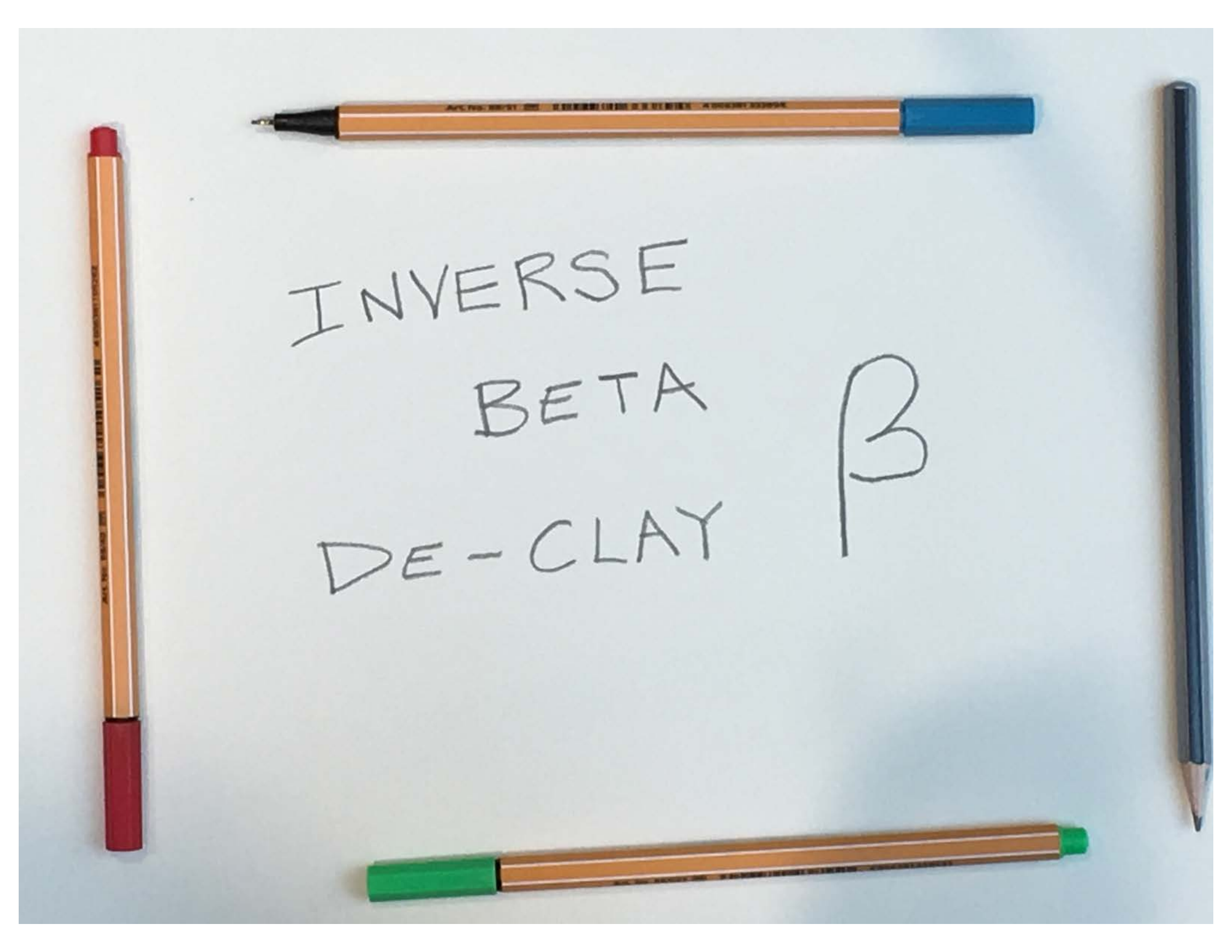
DE-CLAY



INVERSE

BETA

DE-CLAY



INVERSE

BETA

DE-CLAY

β



INVERSE

BETA

DE-CLAY

β



INVERSE

BETA

DE-CLAY

β



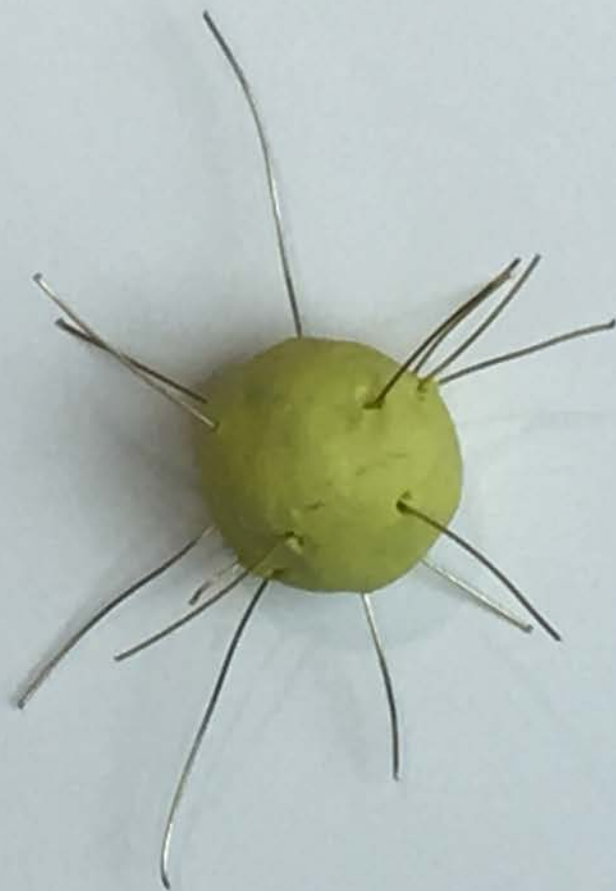








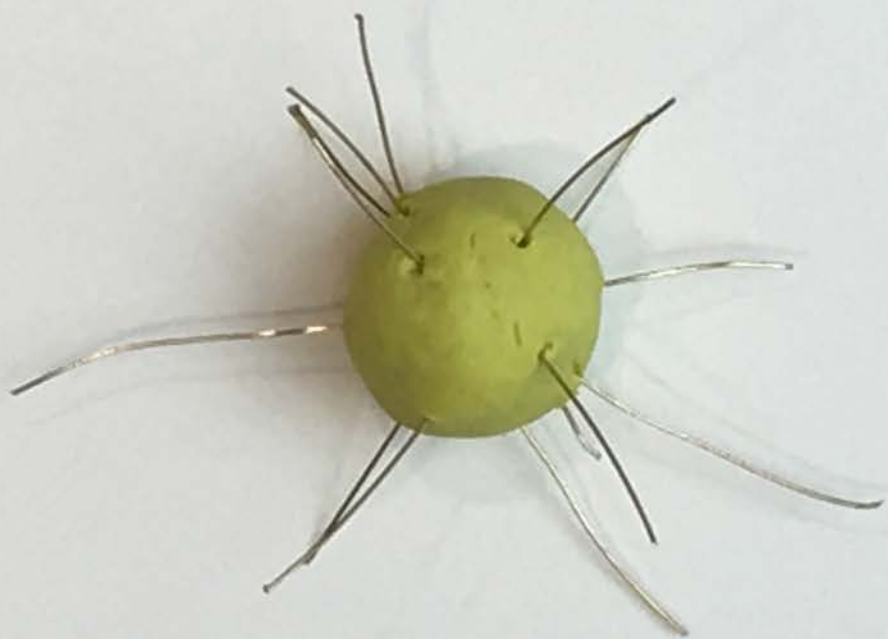








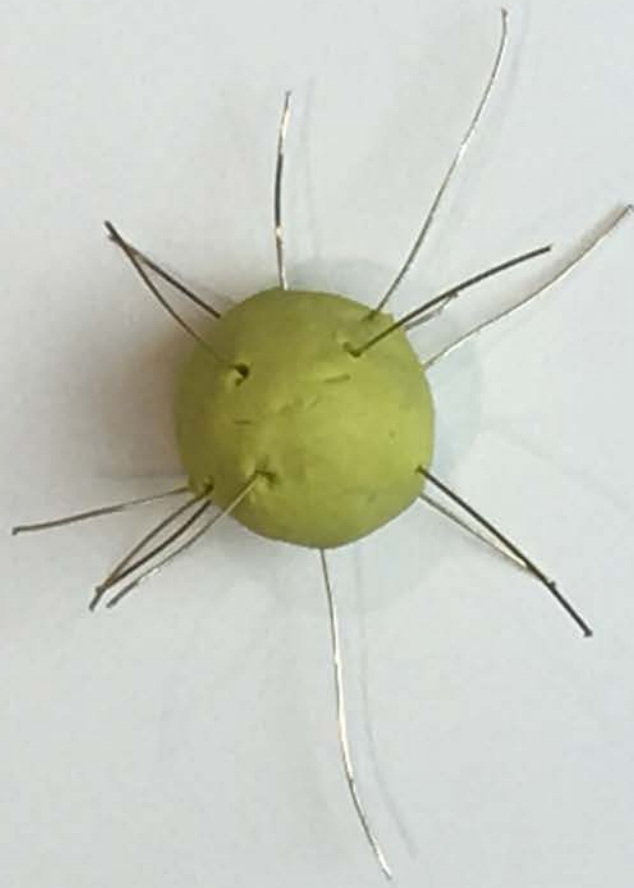












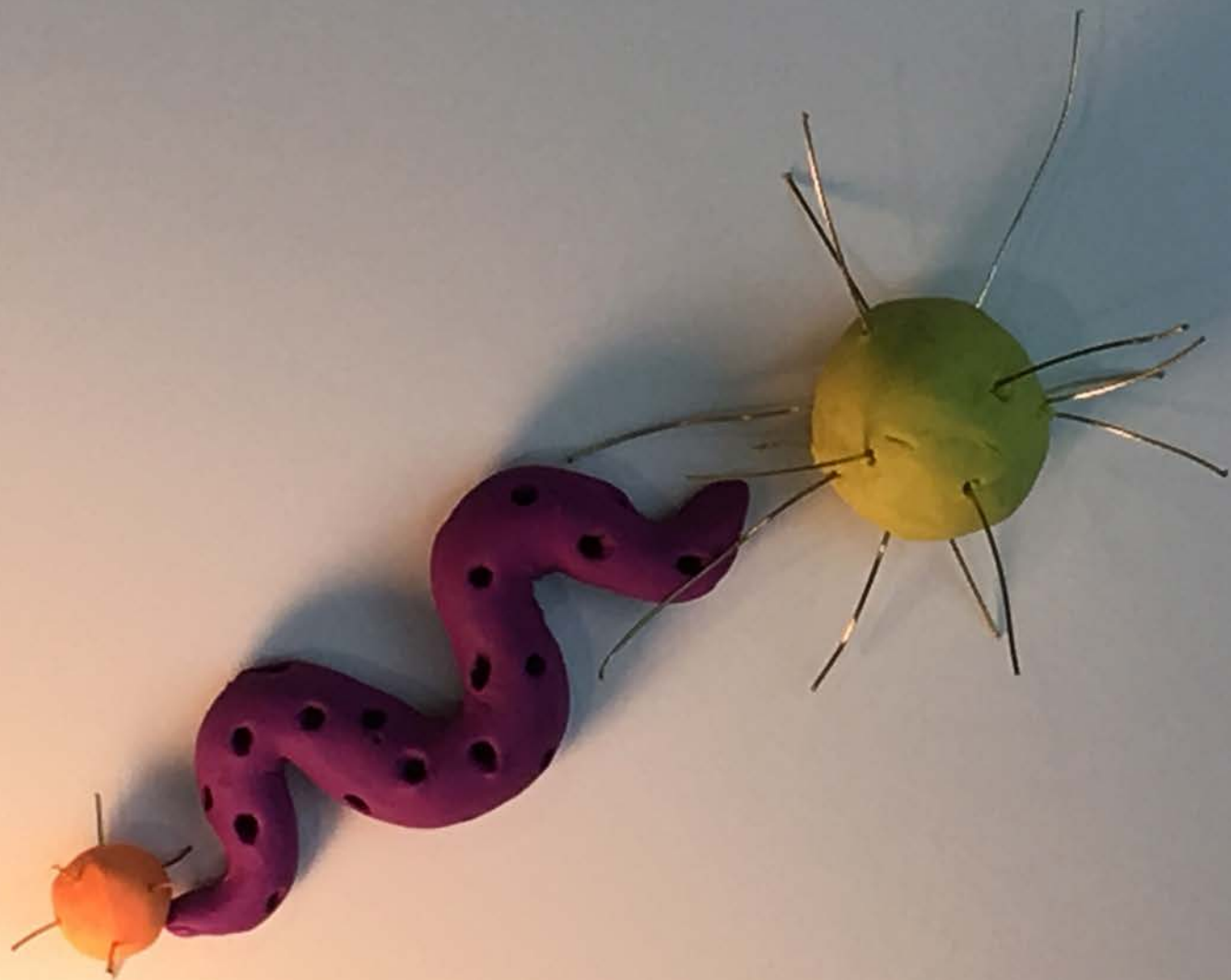




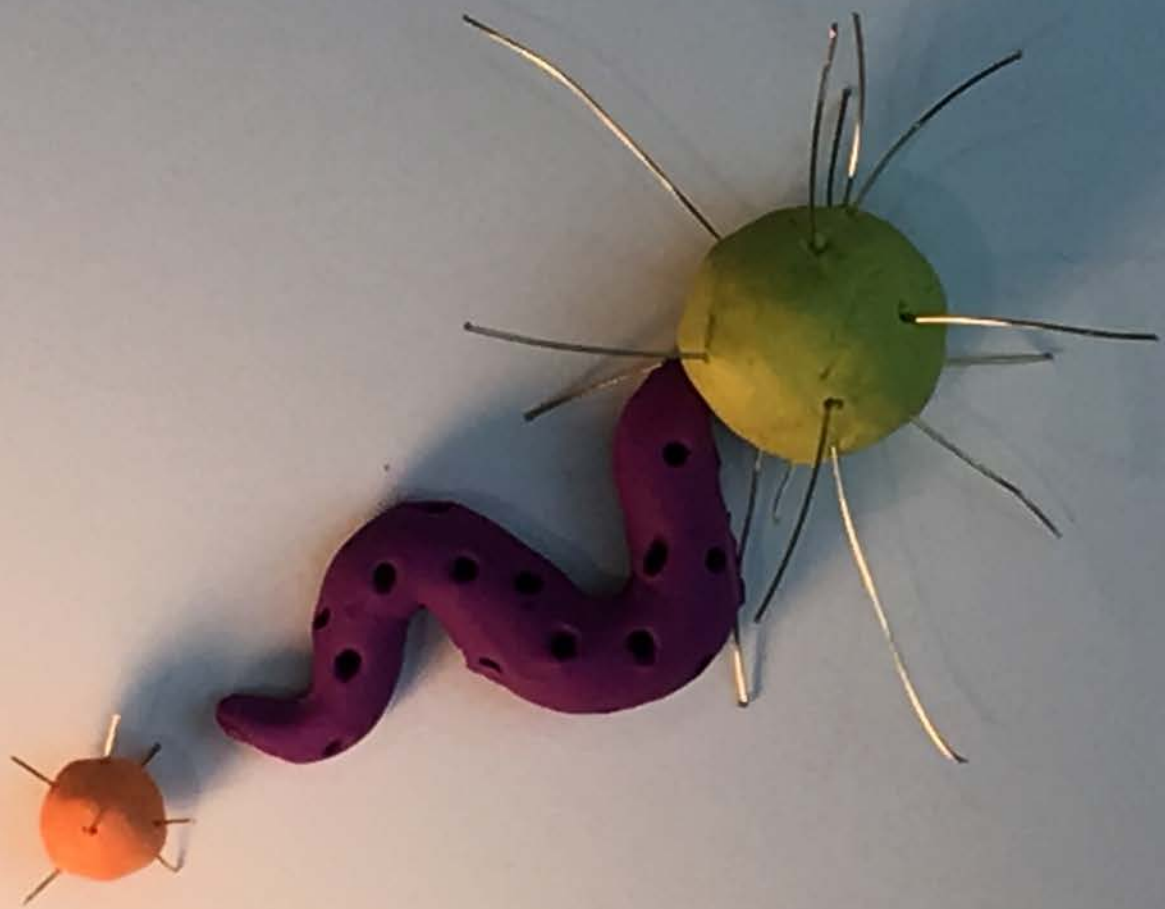


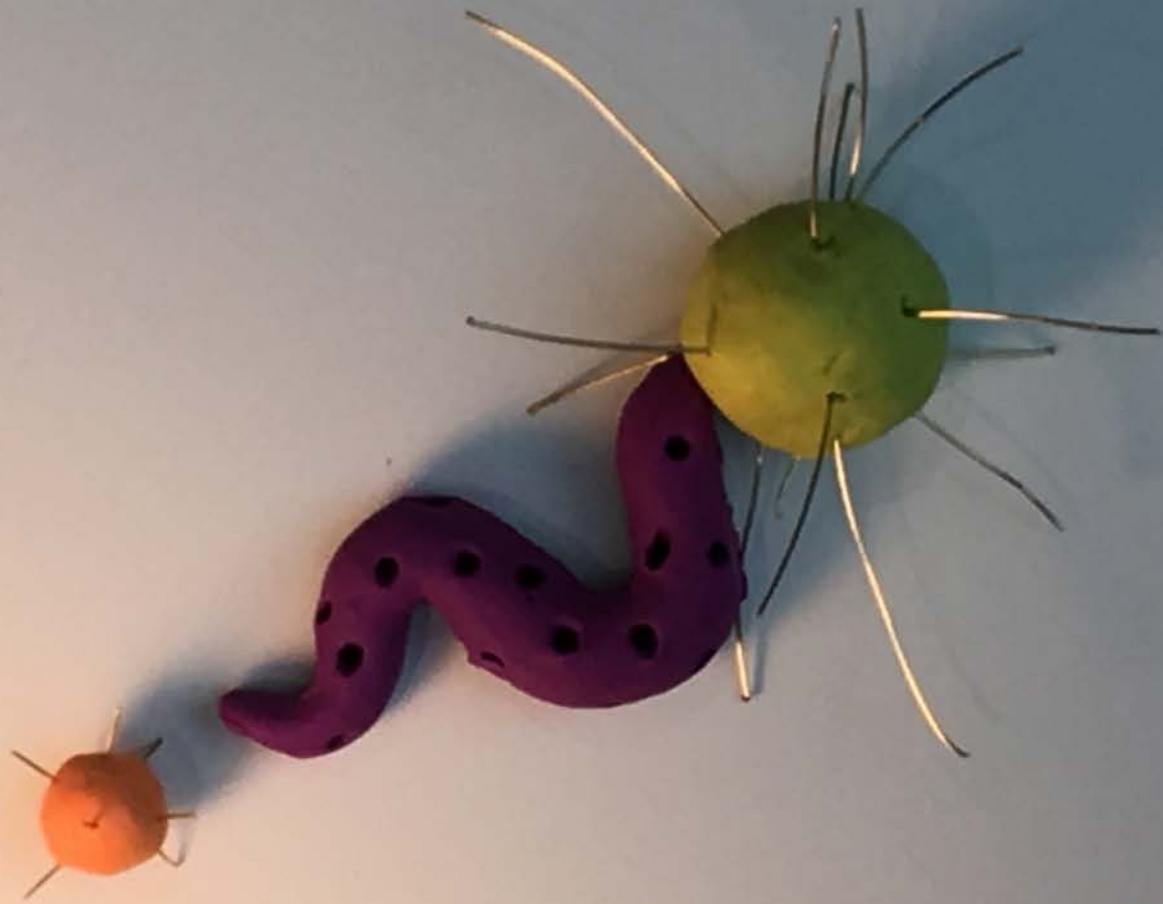


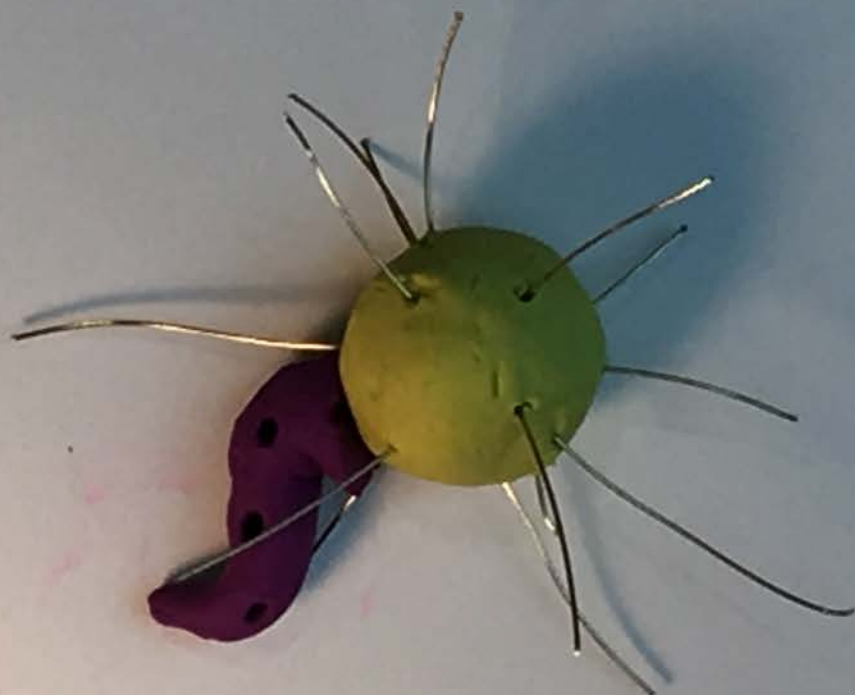














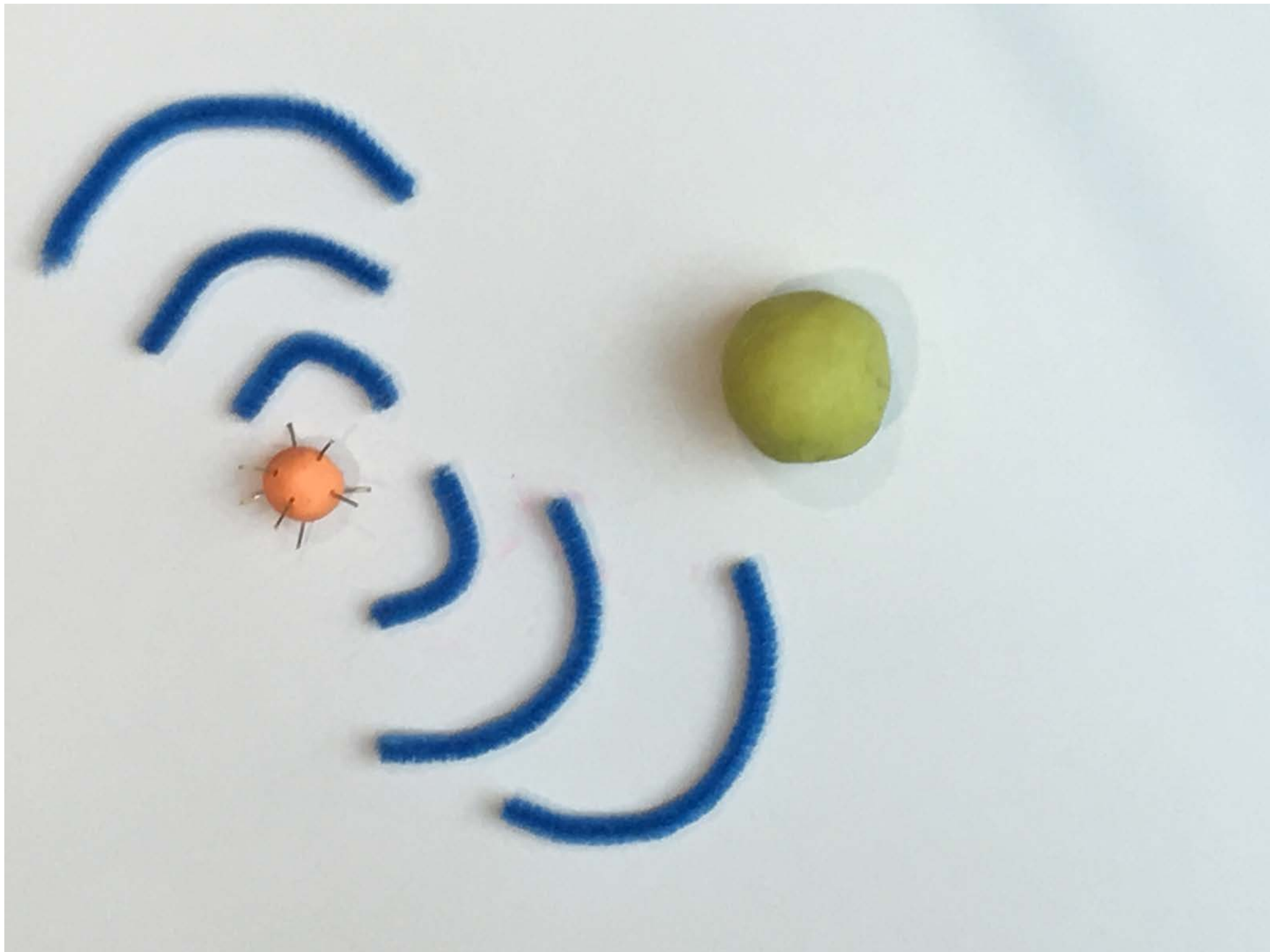


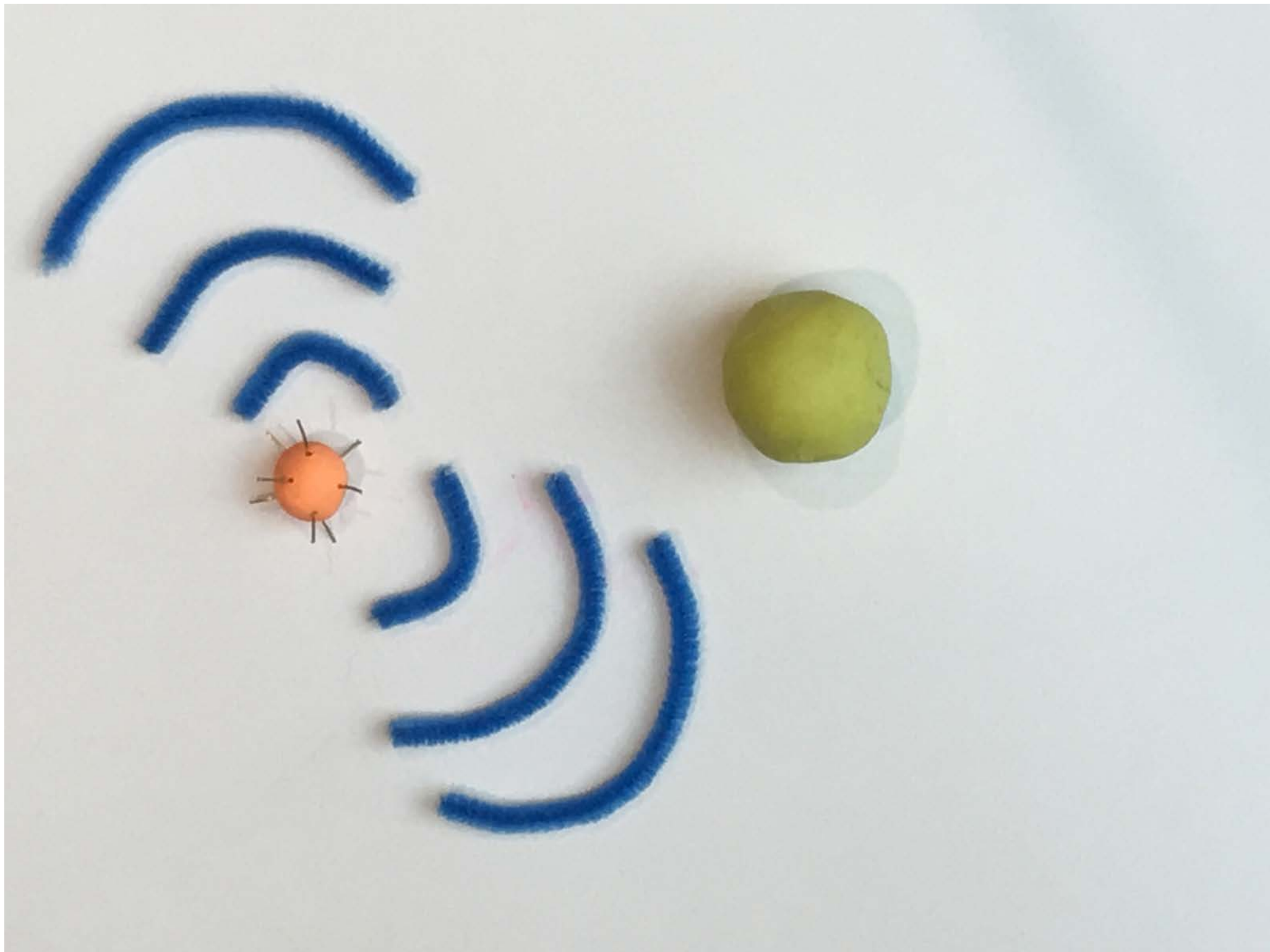






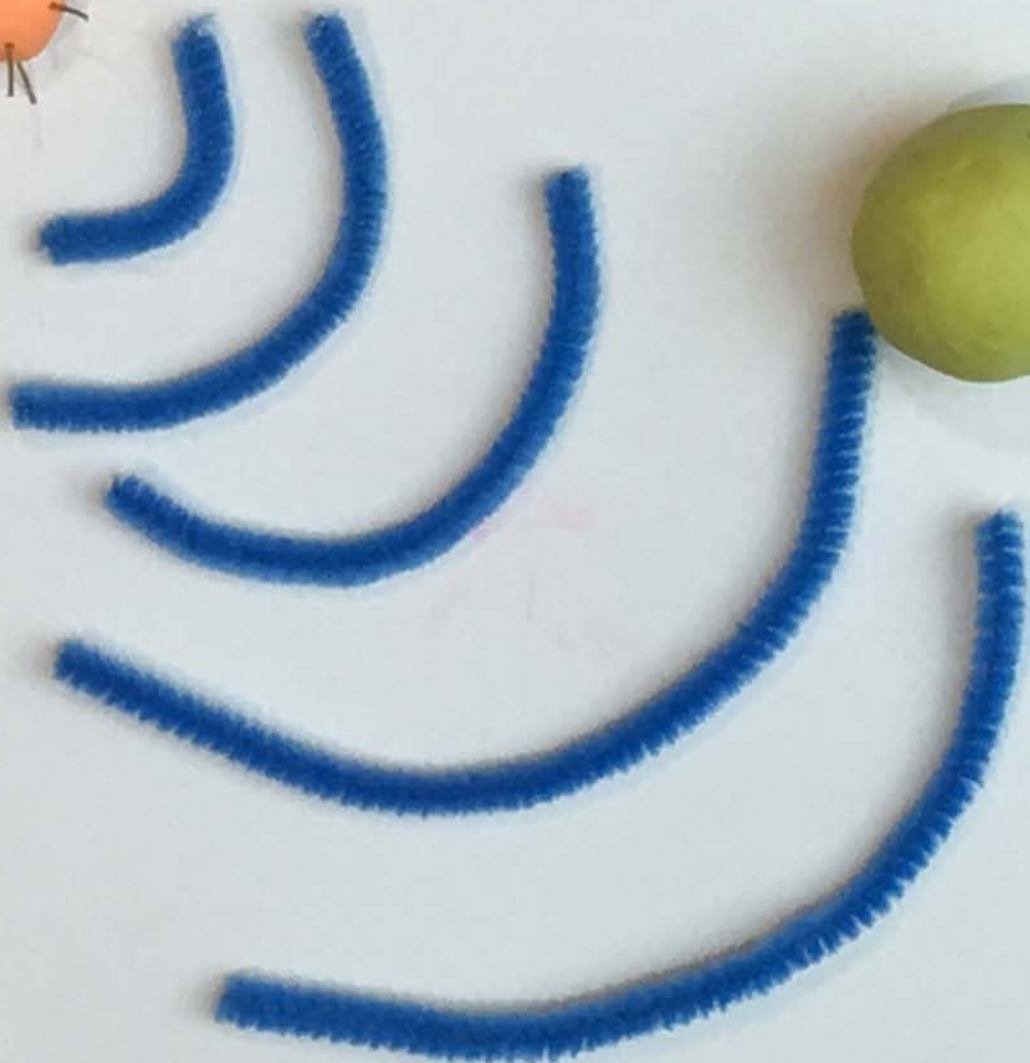


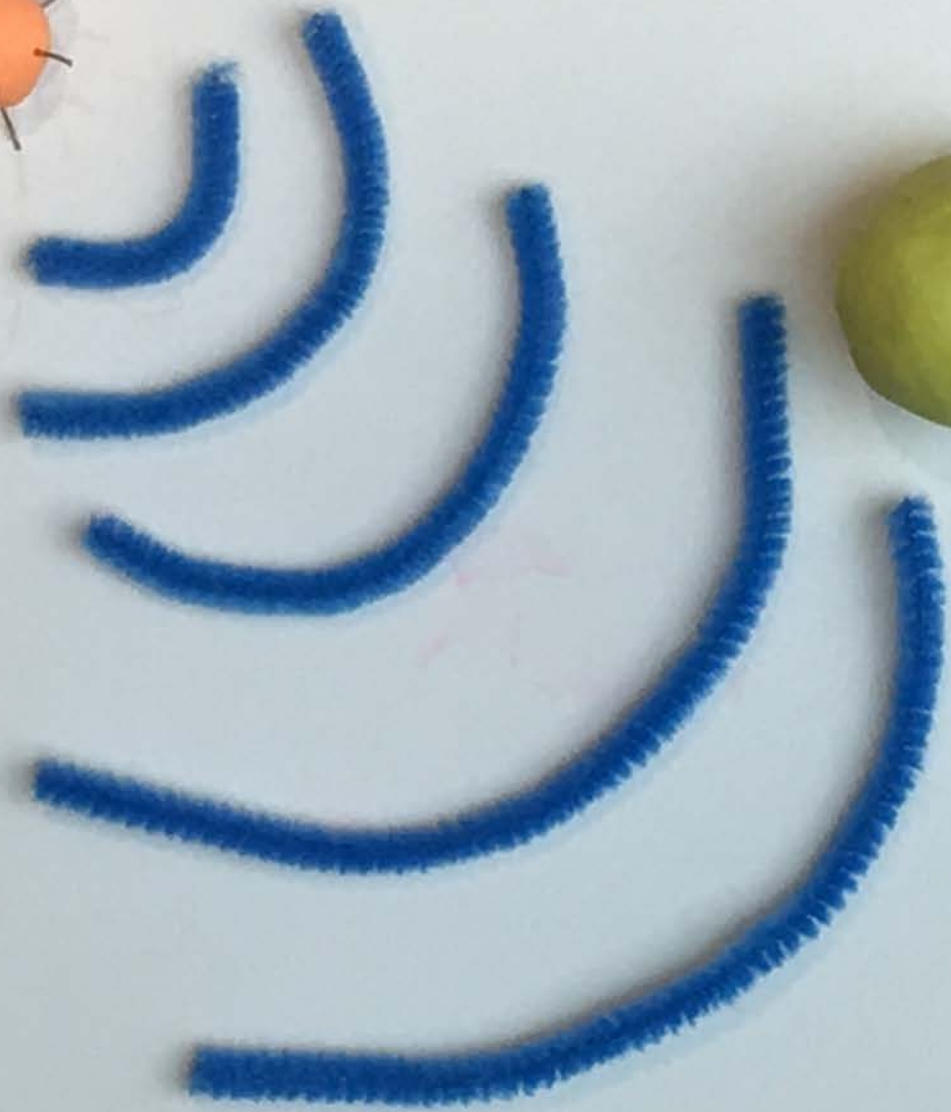


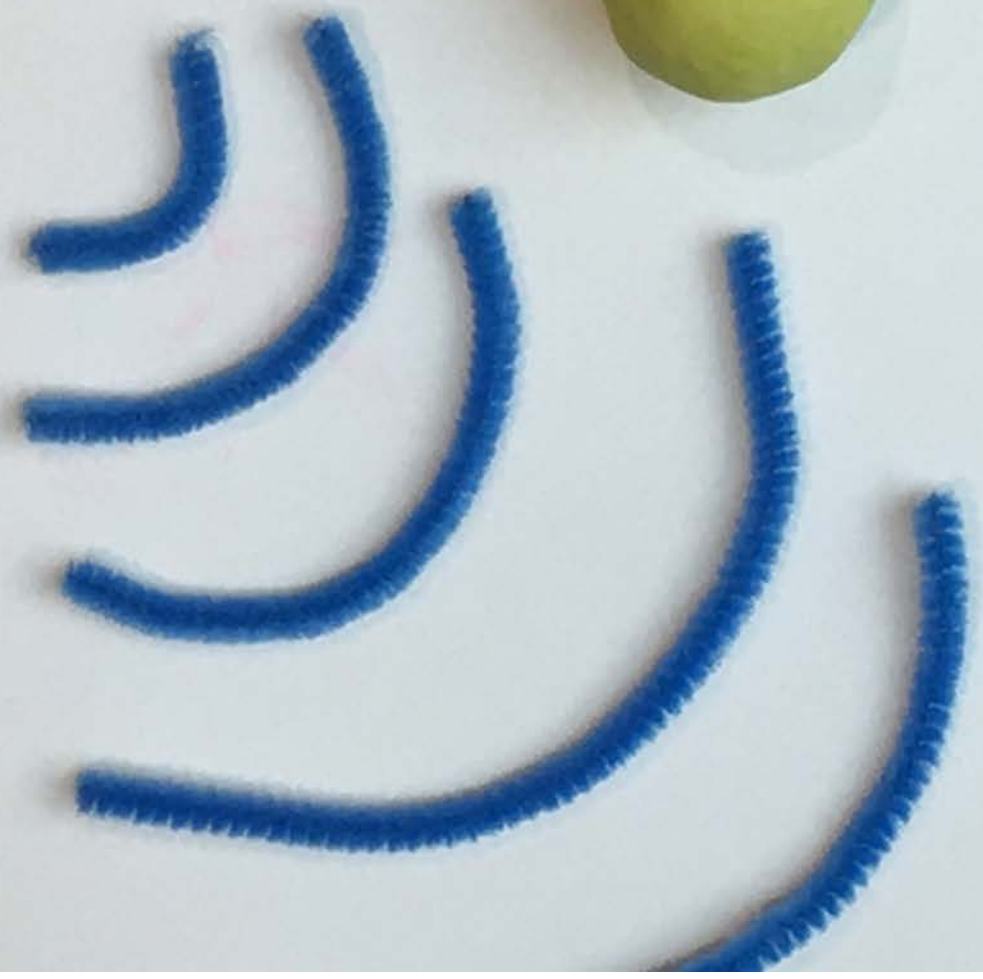


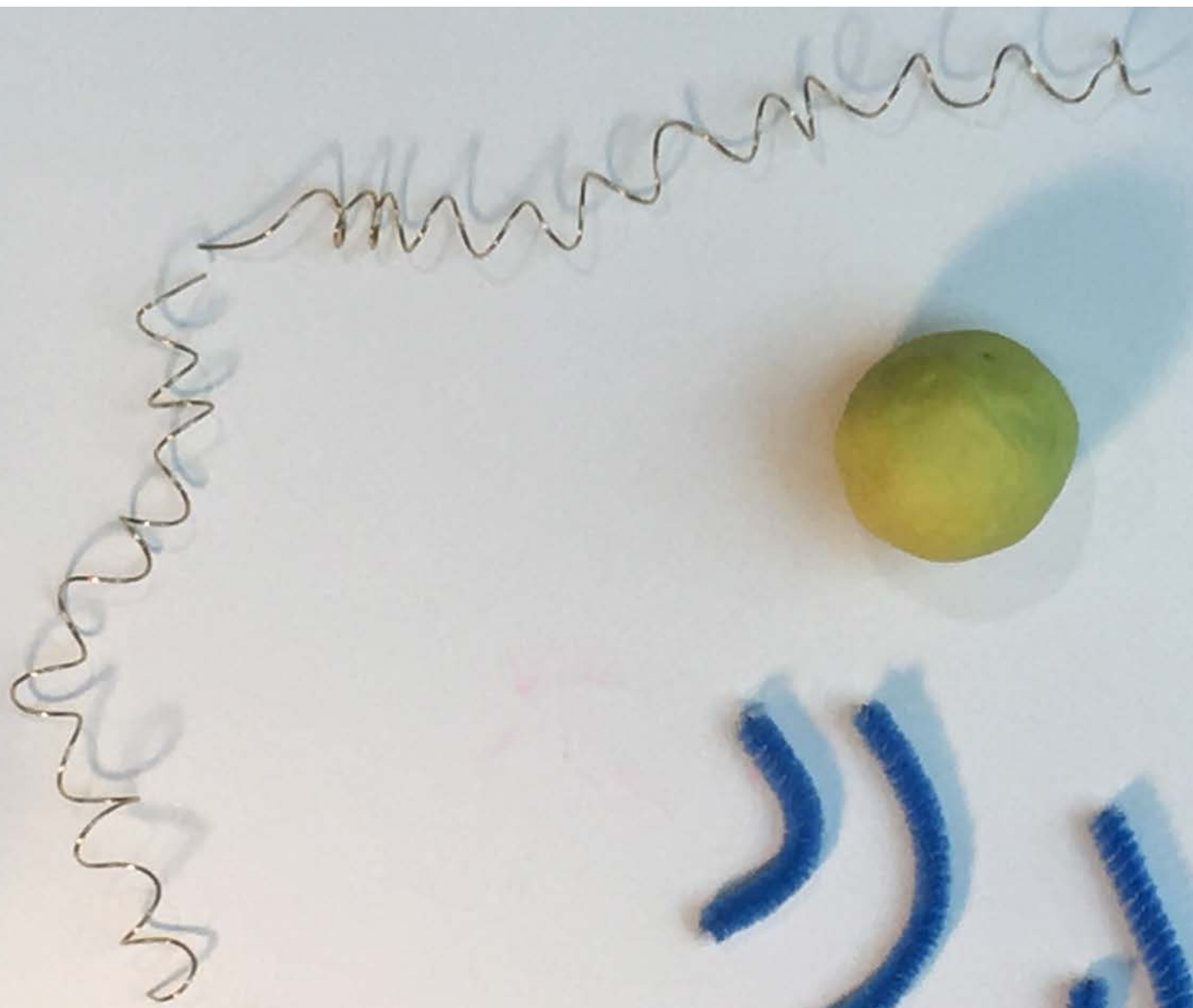




















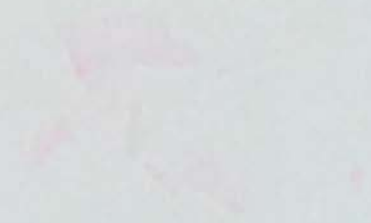
Faint, illegible markings or text, possibly a signature or stamp, located below the object.



Handwritten text in pink ink, possibly a signature or initials, located below the green object.



Handwritten text in pink ink, possibly a signature or a name, is visible below the grape. The text is faint and difficult to decipher, but it appears to be written in a cursive or semi-cursive style.



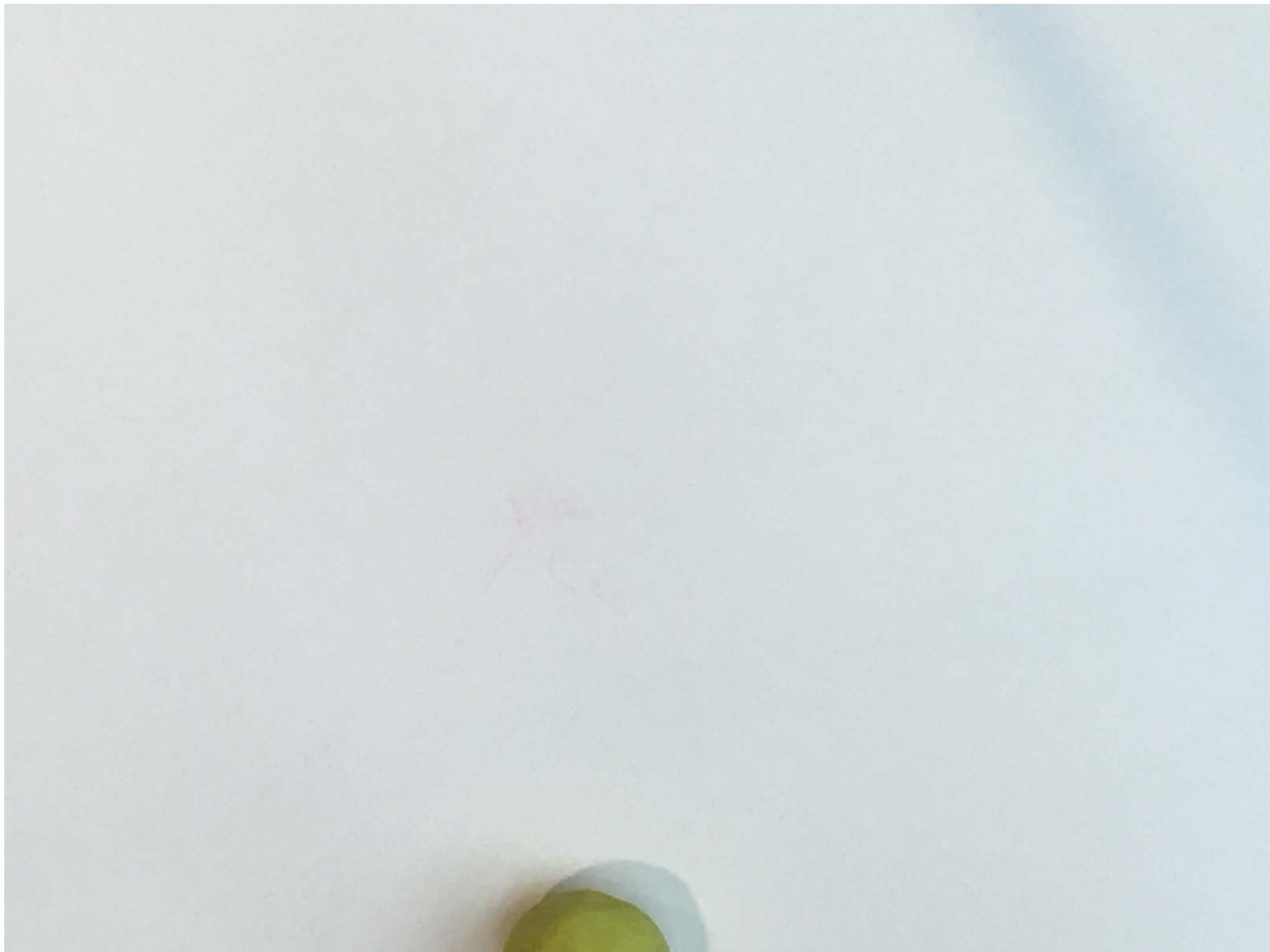














The End!

(until the neutron capture ~next week)